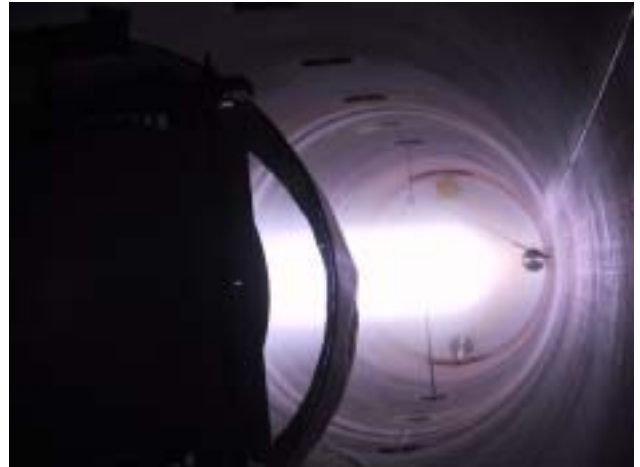
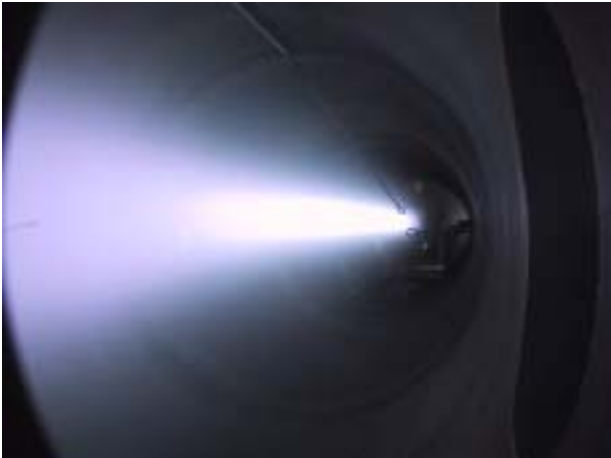


[High Power Input] (50+10A)

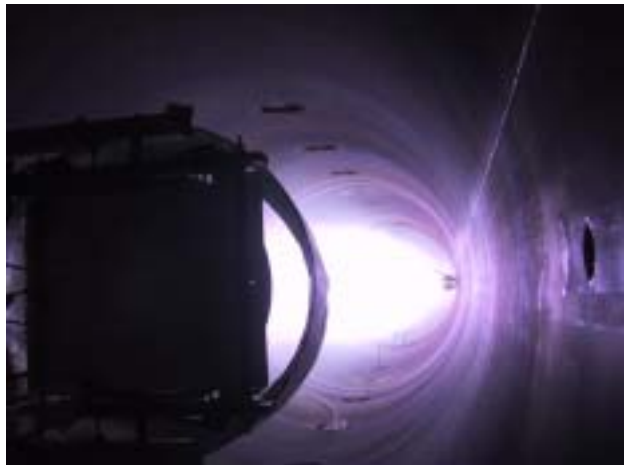
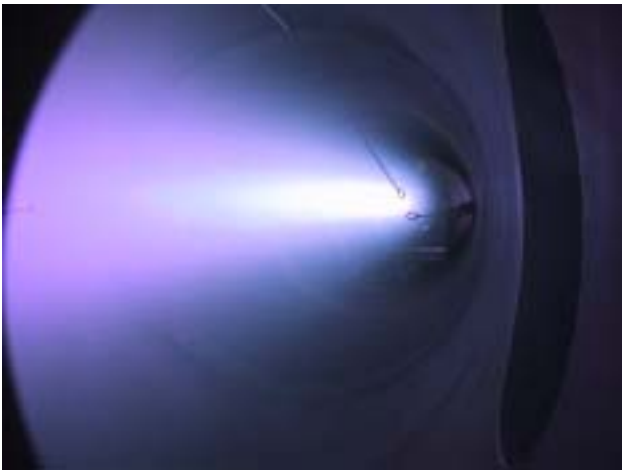
020115,17

(From Antenna Side)

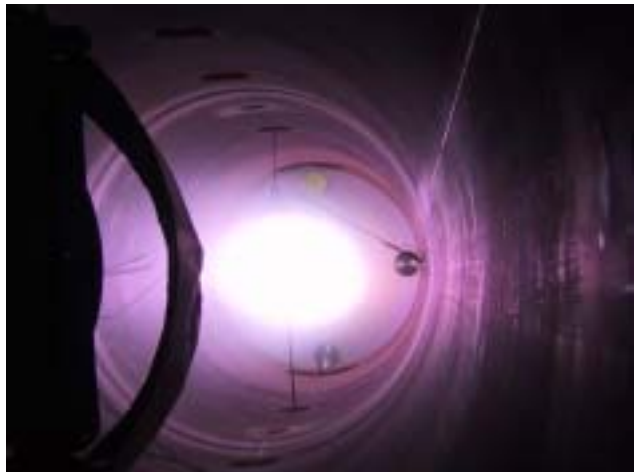
(From BaO Side)



$P_{\text{inp}} = 803 \text{ W}, P_0 = 0.19 \text{ mTorr}$ (Assump. $T_e = 3 \text{ eV}$)
 $n_e = 4.1 \times 10^{11} \text{ cm}^{-3}$ ($z = 40 \text{ cm}$), $8.3 \times 10^{11} \text{ cm}^{-3}$ (150 cm), $2.1 \times 10^{11} \text{ cm}^{-3}$ (320 cm)



$P_{\text{inp}} = 733 \text{ W}, P_0 = 0.5 \text{ mTorr}$
 $n_e = 9.7 \times 10^{11} \text{ cm}^{-3}$ (40 cm), $2.2 \times 10^{12} \text{ cm}^{-3}$ (150 cm), $4.6 \times 10^{11} \text{ cm}^{-3}$ (320 cm)



$P_{\text{inp}} = 637 \text{ W}, P_0 = 2 \text{ mTorr}$
 $n_e = 7.5 \times 10^{11} \text{ cm}^{-3}$ (40 cm), $7.6 \times 10^{11} \text{ cm}^{-3}$ (150 cm), $1.7 \times 10^{11} \text{ cm}^{-3}$ (320 cm)